

Platalea leucorodia

EURASIAN SPOONBILL

SPEC 2 (1994: 2) **Status** Rare

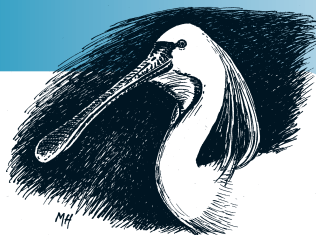
Criteria <10,000 pairs

European IUCN Red List Category —

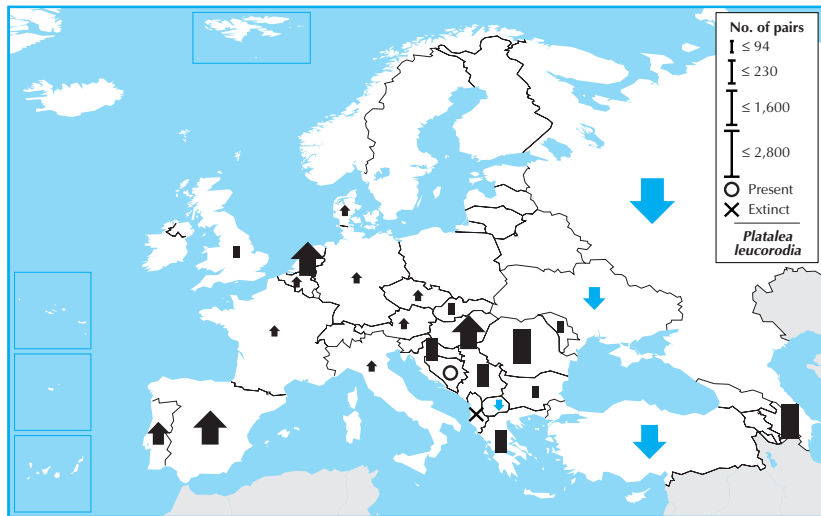
Criteria —

Global IUCN Red List Category —

Criteria —



Platalea leucorodia is a widespread but patchily distributed breeder across much of southern Europe, which holds just over 50% of its global population. Its European breeding population is small (as few as 8,900 pairs), and underwent a large decline between 1970–1990. Although the sizeable Russian population continued to decline during 1990–2000, the species increased or was stable across most of the rest of Europe, and was stable overall. Nevertheless, its population size renders it susceptible to the risks affecting small populations, and consequently it is evaluated as Rare.



Country	Breeding pop. size (pairs)	Year(s)	Trend	Mag.%	References
Albania	0 – 0	96-02	-	X	4
Austria	40 – 77	98-02	+	>80	
Azerbaijan	800 – 2,500	96-00	(0)	(0-19)	
Belgium	3 – 5	00-02	+	N	1
Bosnia & HG	Present	85-89	?	-	
Bulgaria	60 – 100	00-02	F	20-29	
Croatia	80 – 180	02	0	0-19	16,44
Czech Rep.	3 – 5	00	+	30-49	
Denmark	3 – 7	98-01	+	N	4,5,6,7
France	91 – 98	01	+	>80	6
Germany	42 – 42	95-99	+	>80	
Greece	150 – 200	98-99	F	30-49	
Hungary	850 – 1,200	98-02	+	50-79	
Italy	77 – 80	01	+	>80	6
Macedonia	0 – 20	90-00	(-)	(0-19)	7
Moldova	0 – 20	90-00	0	0-19	
Netherlands	1,000 – 1,270	98-00	+	97	1
Portugal	100 – 200	02	(+)	(-)	
Romania	1,100 – 1,500	90-02	0	0-19	47
Russia	2,500 – 3,000	90-00	-	20-29	6,8,33,60,120,178
Serbia & MN	190 – 200	00-02	0	0-19	163,65,67,138, 155,156
Slovakia	0 – 35	80-99	F	30-49	
Spain	1,000 – 2,500	00-01	+	0-19	10,16
Turkey	600 – 1,200	01	-	30-49	
Ukraine	200 – 250	90-98	-	10-19	
UK	1 – 7	99-00	F	N	

Total (approx.)	8,900 – 15,000	Overall trend Stable
Breeding range	>250,000 km ²	Gen. length 9 % Global pop. 50-74 (See p. 48, bottom, for data quality graph)

Country	Winter pop. size (individuals)	Year(s)	Trend	Mag.%	References
Albania	3 – 24	95-02	(F)	(-)	
Bulgaria	0 – 30	97-01	F	>80	
Croatia	50 – 100	02	(F)	(-)	16,26
France	180 – 360	98-02	+	30-49	9
Greece	140 – 330	95-99	F	30-49	
Italy	60 – 400	02	+	20-29	22
Portugal	140 – 180	96-01	(F)	(-)	18
Serbia & MN	30 – 150	90-02	F	50-100	
Turkey	50 – 200	91-01	F	>80	

Total (approx.)	>700	Overall trend Small increase
% in European IBAs	54-87	Gen. length 9 % Global pop. <5